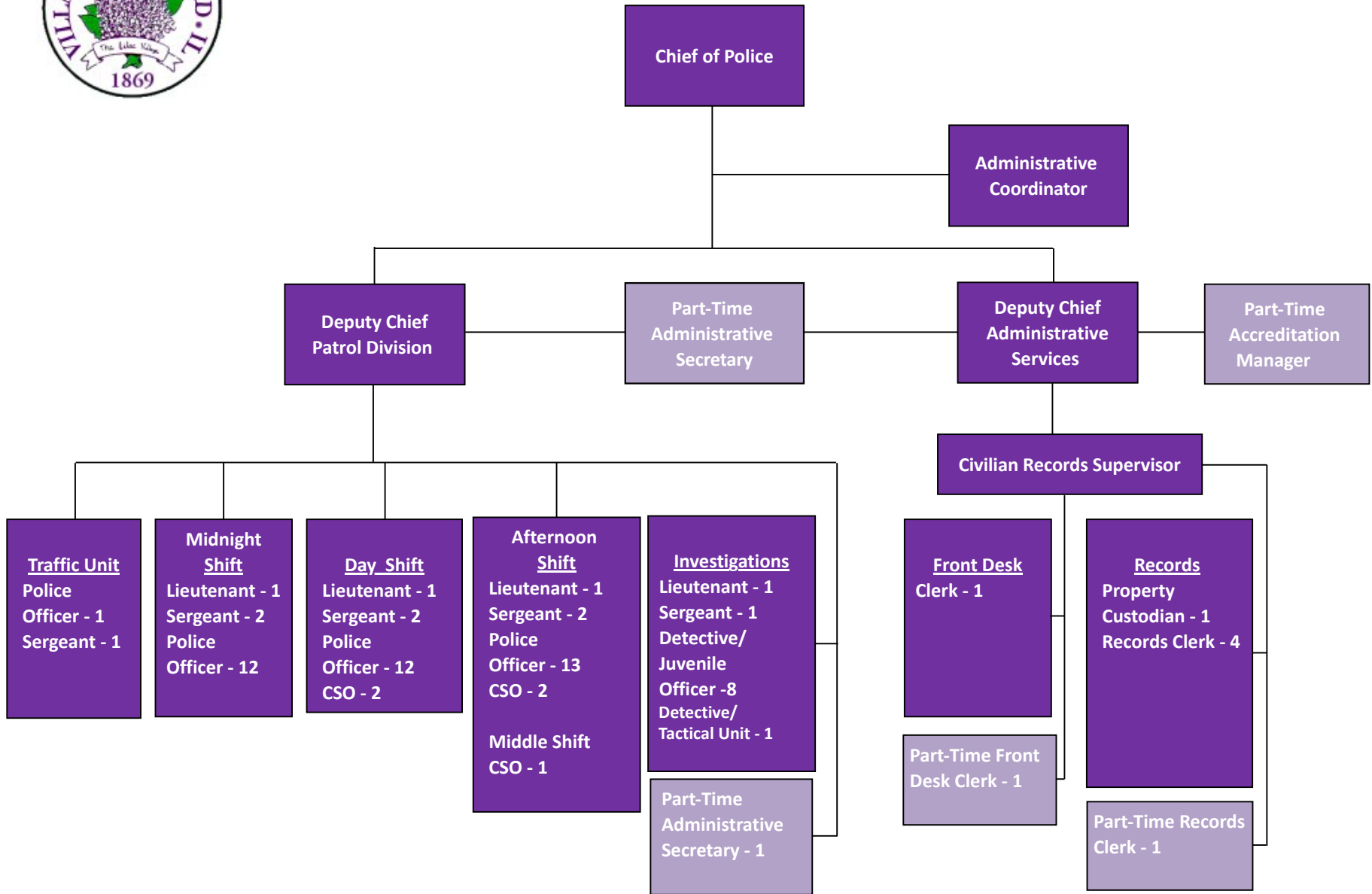




POLICE DEPARTMENT



Full time
 Part time

Expenditure Detail by Department

Department: 210 - Police

Account		Actual	Amended Budget	Year-End Estimate	Board Approved
Number	Account Description	2024	2025	2025	2026
Fund: 101 - General Fund					
<i>10 - Personal Services</i>					
71110	Regular Wages	\$8,405,895	\$8,108,610	\$8,926,730	\$8,530,160
71120	Part-Time Wages	\$140,086	\$184,580	\$203,770	\$203,760
71140	Overtime Wages	\$383,344	\$353,500	\$349,600	\$348,500
71210	PPO-Health Insurance	\$243,318	\$243,330	\$257,600	\$284,380
71220	PPO Plus-Health Insurance	\$251,647	\$275,560	\$288,950	\$296,040
71240	Blue Advantage-Health Insurance	\$627,897	\$613,510	\$607,950	\$635,040
71410	Life Insurance	\$6,777	\$13,750	\$14,300	\$13,750
71420	Social Security	\$54,679	\$54,980	\$59,490	\$59,980
71430	Medicare	\$127,096	\$120,330	\$132,480	\$126,710
71440	Employer Pension Contribution-IMRF	\$47,326	\$47,660	\$51,860	\$61,660
71520	Tuition Reimbursements	\$0	\$2,000	\$2,000	\$2,000
71540	Employee Recognition	\$985	\$700	\$700	\$1,000
<i>Account Classification Total: 10 - Personal Services</i>		\$10,289,049	\$10,018,510	\$10,895,430	\$10,562,980
<i>20 - Commodities</i>					
73110	Operating Supplies	\$126,201	\$132,520	\$136,020	\$134,600
73120	Uniforms	\$102,994	\$84,980	\$87,720	\$85,180
73330	Janitorial Supplies	\$8,725	\$8,500	\$8,500	\$9,000
73910	Technology Software	\$6,143	\$6,500	\$6,500	\$6,500
73920	Technology Equipment	\$119,850	\$155,720	\$155,720	\$343,490
<i>Account Classification Total: 20 - Commodities</i>		\$363,912	\$388,220	\$394,460	\$578,770
<i>30 - Contractual Services</i>					
75010	Training & Travel	\$105,382	\$85,200	\$88,200	\$82,000
75020	Dues & Subscriptions	\$5,220	\$14,580	\$14,580	\$14,580
75210	Printing & Binding	\$5,817	\$5,700	\$6,200	\$6,200
75330	Emergency Dispatch	\$897,106	\$975,790	\$985,330	\$922,730
75350	Other Prof/Tech Services	\$302,759	\$156,230	\$156,220	\$198,020
75610	Property/Building Maintenance	\$2,596	\$6,100	\$6,100	\$6,400
75620	Repairs & Improvements	\$22,073	\$12,000	\$3,000	\$12,000
75710	Computer Service Contracts	\$146,265	\$134,690	\$134,690	\$134,700
75730	Equipment Service Contracts	\$13,127	\$26,900	\$26,900	\$30,450
75740	Equipment Maintenance	\$175	\$18,000	\$18,000	\$18,000
75770	Misc Contractual Obligations	\$11,984	\$18,380	\$18,380	\$16,900

Expenditure Detail by Department

Department: 210 - Police

Account		Actual	Amended Budget	Year-End Estimate	Board Approved
Number	Account Description	2024	2025	2025	2026
76010	Trfr to Fleet Services O&M	\$324,370	\$358,680	\$358,680	\$420,390
76011	Trfr to Fleet Services Reserve	\$234,070	\$205,230	\$205,230	\$190,300
76020	Trfr to Technology Reserve	\$16,550	\$0	\$0	\$0
76050	Trfr to Police Pension	\$4,190,333	\$4,516,150	\$4,516,260	\$4,495,040
<i>Account Classification Total: 30 - Contractual Services</i>		\$6,277,827	\$6,533,630	\$6,537,770	\$6,547,710
Department Total: 210 - Police		\$16,930,788	\$16,940,360	\$17,827,660	\$17,689,460

Fund: 205 - DUI Equipment/Tech Fund

20 - Commodities

73110	Operating Supplies	\$5,156	\$25,000	\$25,000	\$25,000
73920	Technology Equipment	\$74,240	\$37,820	\$37,820	\$38,000
<i>Account Classification Total: 20 - Commodities</i>		\$79,396	\$62,820	\$62,820	\$63,000
Department Total: 210 - Police		\$79,396	\$62,820	\$62,820	\$63,000

Fund: 210 - Police Donation Fund

20 - Commodities

73110	Operating Supplies	\$1,423	\$1,000	\$1,000	\$1,000
<i>Account Classification Total: 20 - Commodities</i>		\$1,423	\$1,000	\$1,000	\$1,000
Department Total: 210 - Police		\$1,423	\$1,000	\$1,000	\$1,000

Fund: 235 - Grant Fund

10 - Personal Services

71140	Overtime Wages	\$140,238	\$110,000	\$110,000	\$110,000
<i>Account Classification Total: 10 - Personal Services</i>		\$140,238	\$110,000	\$110,000	\$110,000

20 - Commodities

73110	Operating Supplies	\$4,003	\$4,000	\$7,000	\$7,000
73120	Uniforms	\$6,187	\$0	\$0	\$0
73920	Technology Equipment	\$12,000	\$50,000	\$50,000	\$50,000
<i>Account Classification Total: 20 - Commodities</i>		\$22,190	\$54,000	\$57,000	\$57,000

30 - Contractual Services

75010	Training & Travel	\$9,292	\$0	\$1,500	\$0
75350	Other Prof/Tech Services	\$1,000	\$4,500	\$4,500	\$4,500
<i>Account Classification Total: 30 - Contractual Services</i>		\$10,292	\$4,500	\$6,000	\$4,500
Department Total: 210 - Police		\$172,721	\$168,500	\$173,000	\$171,500

Expenditure Detail by Department

Department: 210 - Police

Account		Actual	Amended Budget	Year-End Estimate	Board Approved
Number	Account Description	2024	2025	2025	2026
Fund: 240 - Hotel/Motel Tax Fund					
<i>10 - Personal Services</i>					
71110	Regular Wages	\$17,792	\$22,490	\$23,310	\$23,230
71140	Overtime Wages	\$71,300	\$45,000	\$45,000	\$45,000
71220	PPO Plus-Health Insurance	\$227	\$230	\$230	\$250
71240	Blue Advantage-Health Insurance	\$1,868	\$1,610	\$1,610	\$1,670
71410	Life Insurance	\$11	\$20	\$20	\$20
71430	Medicare	\$265	\$330	\$340	\$340
<i>Account Classification Total: 10 - Personal Services</i>		\$91,463	\$69,680	\$70,510	\$70,510
<i>20 - Commodities</i>					
73110	Operating Supplies	\$2,600	\$0	\$0	\$0
<i>Account Classification Total: 20 - Commodities</i>		\$2,600	\$0	\$0	\$0
Department Total: 210 - Police		\$94,063	\$69,680	\$70,510	\$70,510
Fund: 245 - Federal Seizure Fund					
<i>10 - Personal Services</i>					
71140	Overtime Wages	\$0	\$12,000	\$0	\$0
<i>Account Classification Total: 10 - Personal Services</i>		\$0	\$12,000	\$0	\$0
<i>20 - Commodities</i>					
73110	Operating Supplies	\$25,841	\$25,000	\$2,500	\$2,500
73920	Technology Equipment	\$27,222	\$25,000	\$13,620	\$15,000
<i>Account Classification Total: 20 - Commodities</i>		\$53,063	\$50,000	\$16,120	\$17,500
<i>50 - Debt Service</i>					
78011	Leased Assets - Principal	\$32,608	\$0	\$0	\$0
78021	Leased Asset - Interest	\$4,892	\$0	\$0	\$0
<i>Account Classification Total: 50 - Debt Service</i>		\$37,500	\$0	\$0	\$0
Department Total: 210 - Police		\$90,563	\$62,000	\$16,120	\$17,500
Fund: 250 - State Seizure Fund					
<i>20 - Commodities</i>					
73110	Operating Supplies	\$0	\$15,000	\$15,000	\$15,000
<i>Account Classification Total: 20 - Commodities</i>		\$0	\$15,000	\$15,000	\$15,000
Department Total: 210 - Police		\$0	\$15,000	\$15,000	\$15,000

Expenditure Detail by Department

Department: 210 - Police

Account	Actual	Amended	Year-End	Board
Number Account Description	2024	Budget	Estimate	Approved
	2024	2025	2025	2026
Fund: 270 - Liability Insurance Fund				
<i>30 - Contractual Services</i>				
75350 Other Prof/Tech Services	\$28,027	\$29,150	\$28,180	\$29,740
75510 Insurance Premiums	\$195,419	\$208,780	\$213,490	\$228,270
75530 Insurance Claims-General Liability	\$0	\$6,920	\$1,690	\$4,860
75540 Insurance Claims-Auto	\$0	\$14,790	\$2,440	\$15,370
75550 Insurance Claims-Property	\$0	\$4,430	\$2,250	\$3,360
75560 Insurance Claims-Workers Compensation	\$165,038	\$284,870	\$144,690	\$312,370
76010 Trfr to Fleet Services O&M	\$3,161	\$0	\$0	\$0
<i>Account Classification Total: 30 - Contractual Services</i>	<u>\$391,645</u>	<u>\$548,940</u>	<u>\$392,740</u>	<u>\$593,970</u>
Department Total: 210 - Police	\$391,645	\$548,940	\$392,740	\$593,970
Fund: 285 - Opioid Settlement Fund				
<i>30 - Contractual Services</i>				
75770 Misc Contractual Obligations	\$1,667	\$20,000	\$20,000	\$20,000
<i>Account Classification Total: 30 - Contractual Services</i>	<u>\$1,667</u>	<u>\$20,000</u>	<u>\$20,000</u>	<u>\$20,000</u>
Department Total: 210 - Police	\$1,667	\$20,000	\$20,000	\$20,000
Police Department Grand Total:	<u>\$17,762,265</u>	<u>\$17,888,300</u>	<u>\$18,578,850</u>	<u>\$18,641,940</u>

101.210.110 Police Administration

COST CENTER DESCRIPTION

Police Administration is responsible for providing direction and supervision to personnel through its planning, analysis, inspections, personnel management and fiscal control efforts. The Accreditation Manager/Planning and Analysis program component is responsible for the continuation of the department's accreditation status and provides planning for major departmental projects. This component also provides crime analysis services and assists with departmental recruiting efforts.

Expenditure Detail by Cost Center					
Account		Actual	Amended Budget	Year-End Estimate	Board Approved
Number	Account Description	2024	2025	2025	2026
Fund: 101 - General Fund					
Department: 210 - Police					
Cost Center: 110 - Administration					
71110	Regular Wages	\$639,341	\$633,760	\$690,890	\$649,990
71120	Part-Time Wages	\$84,850	\$95,250	\$98,040	\$98,040
71140	Overtime Wages	\$2,046	\$500	\$1,600	\$500
71210	PPO-Health Insurance	\$36,144	\$32,320	\$32,320	\$36,810
71240	Blue Advantage-Health Insurance	\$96,249	\$95,780	\$95,780	\$99,350
71410	Life Insurance	\$384	\$810	\$810	\$810
71420	Social Security	\$9,409	\$10,400	\$10,790	\$10,790
71430	Medicare	\$9,665	\$10,610	\$11,480	\$10,880
71440	Employer Pension Contribution-IMRF	\$4,684	\$6,500	\$6,820	\$8,040
71540	Employee Recognition	\$985	\$700	\$700	\$1,000
73110	Operating Supplies	\$18,489	\$19,000	\$19,000	\$19,000
73120	Uniforms	\$3,575	\$3,550	\$3,550	\$3,600
73910	Technology Software	\$6,143	\$6,500	\$6,500	\$6,500
75010	Training & Travel	\$8,955	\$4,000	\$4,000	\$5,000
75020	Dues & Subscriptions	\$5,055	\$3,600	\$3,600	\$3,600
75210	Printing & Binding	\$1,282	\$1,700	\$1,700	\$1,700
75330	Emergency Dispatch	\$9,653	\$62,380	\$9,540	\$8,770
75350	Other Prof/Tech Services	\$4,750	\$7,020	\$7,020	\$7,020
75770	Misc Contractual Obligations	\$0	\$2,000	\$2,000	\$2,000
76010	Trfr to Fleet Services O&M	\$7,535	\$10,590	\$10,590	\$12,310
76011	Trfr to Fleet Services Reserve	\$15,120	\$15,130	\$15,130	\$10,620
76050	Trfr to Police Pension	\$4,190,333	\$4,516,150	\$4,516,260	\$4,495,040
Cost Center Total: 110 - Administration		\$5,154,648	\$5,538,250	\$5,548,120	\$5,491,370

101.210.113 Police Buildings

COST CENTER DESCRIPTION

This cost center provides for the operation and maintenance of the Police facilities. This includes maintaining and cleaning the Police Department buildings, the maintenance of overhead doors, HVAC system and the building roofs by outside contractors.

Expenditure Detail by Cost Center					
Account		Actual	Amended Budget	Year-End Estimate	Board Approved
Number	Account Description	2024	2025	2025	2026
Fund: 101 - General Fund					
Department: 210 - Police					
Cost Center: 113 - Buildings					
73110	Operating Supplies	\$14,879	\$10,000	\$13,500	\$10,000
73330	Janitorial Supplies	\$8,725	\$8,500	\$8,500	\$9,000
75610	Property/Building Maintenance	\$2,596	\$6,100	\$6,100	\$6,400
75620	Repairs & Improvements	\$22,073	\$12,000	\$3,000	\$12,000
75730	Equipment Service Contracts	\$13,127	\$25,900	\$25,900	\$28,350
75740	Equipment Maintenance	\$0	\$15,000	\$15,000	\$15,000
76010	Trfr to Fleet Services O&M	\$611	\$1,220	\$1,220	\$1,350
Cost Center Total: 113 - Buildings		\$62,011	\$78,720	\$73,220	\$82,100

101.210.120 Patrol Services

COST CENTER DESCRIPTION

The Patrol Services function is the largest component of the Police Department. Within this program, the department's overall goal of providing 24-hour per day, 7-day per week emergency response and visible protection to the citizens is accomplished. Police training is an essential function of the Police Department. Training assists in the development of skills, knowledge and abilities, and reduces civil liability for the Village.

Expenditure Detail by Cost Center						
Account		Actual	Amended Budget	Year-End Estimate	Board Approved	
Number	Account Description	2024	2025	2025	2026	
Fund: 101 - General Fund						
Department: 210 - Police						
Cost Center: 120 - Patrol Services						
71110	Regular Wages	\$5,679,251	\$5,495,300	\$5,977,060	\$5,572,200	
71120	Part-Time Wages	\$135	\$0	\$0	\$0	
71140	Overtime Wages	\$255,953	\$250,000	\$250,000	\$250,000	
71210	PPO-Health Insurance	\$144,700	\$147,680	\$161,950	\$175,800	
71220	PPO Plus-Health Insurance	\$207,989	\$207,390	\$234,970	\$235,770	
71240	Blue Advantage-Health Insurance	\$365,767	\$380,110	\$314,330	\$317,740	
71410	Life Insurance	\$4,626	\$9,250	\$9,550	\$8,890	
71420	Social Security	\$18,875	\$14,380	\$15,880	\$15,880	
71430	Medicare	\$85,787	\$79,430	\$86,320	\$80,470	
71440	Employer Pension Contribution-IMRF	\$14,130	\$13,780	\$15,220	\$17,930	
71520	Tuition Reimbursements	\$0	\$2,000	\$2,000	\$2,000	
73110	Operating Supplies	\$63,052	\$71,520	\$71,520	\$73,600	
73120	Uniforms	\$80,611	\$64,750	\$64,750	\$63,500	
73920	Technology Equipment	\$119,850	\$155,720	\$155,720	\$343,490	
75010	Training & Travel	\$83,617	\$77,800	\$77,800	\$73,400	
75020	Dues & Subscriptions	\$125	\$10,400	\$10,400	\$10,400	
75210	Printing & Binding	\$4,535	\$4,000	\$4,000	\$4,000	
75330	Emergency Dispatch	\$887,453	\$739,780	\$975,790	\$913,940	
75350	Other Prof/Tech Services	\$52,200	\$46,000	\$46,000	\$87,100	
75740	Equipment Maintenance	\$175	\$3,000	\$3,000	\$3,000	
76010	Trfr to Fleet Services O&M	\$287,685	\$319,270	\$319,270	\$376,400	
76011	Trfr to Fleet Services Reserve	\$185,910	\$160,820	\$160,820	\$156,950	
76020	Trfr to Technology Reserve	\$16,550	\$0	\$0	\$0	
Cost Center Total: 120 - Patrol Services		\$8,558,977	\$8,252,380	\$8,956,350	\$8,782,460	

101.210.130 Criminal Investigations and Juvenile Services

COST CENTER DESCRIPTION

Criminal Investigations is responsible for the investigation, arrest and successful prosecution of all serious criminal offenses not performed by patrol service personnel including crimes against persons and property, serious traffic offenses, missing and wanted persons complaints, narcotics violations and offenses committed against and by juveniles.

Expenditure Detail by Cost Center						
Account		Actual	Amended Budget	Year-End Estimate	Board Approved	
Number	Account Description	2024	2025	2025	2026	
Fund: 101 - General Fund						
Department: 210 - Police						
Cost Center: 130 - Criminal Investigations/Juvenile						
71110	Regular Wages	\$1,503,123	\$1,413,000	\$1,529,630	\$1,570,930	
71120	Part-Time Wages	\$26,447	\$26,340	\$27,470	\$27,470	
71140	Overtime Wages	\$87,789	\$80,000	\$80,000	\$80,000	
71210	PPO-Health Insurance	\$22,641	\$22,320	\$22,320	\$25,240	
71220	PPO Plus-Health Insurance	\$35,281	\$36,810	\$45,230	\$50,380	
71240	Blue Advantage-Health Insurance	\$97,993	\$90,110	\$116,930	\$130,340	
71410	Life Insurance	\$1,043	\$2,160	\$2,260	\$2,340	
71420	Social Security	\$1,646	\$1,630	\$1,700	\$1,700	
71430	Medicare	\$22,637	\$21,150	\$22,930	\$23,500	
73110	Operating Supplies	\$13,207	\$15,000	\$15,000	\$15,000	
73120	Uniforms	\$10,163	\$8,580	\$11,320	\$9,330	
75010	Training & Travel	\$11,647	\$1,000	\$4,000	\$1,200	
75020	Dues & Subscriptions	\$0	\$500	\$500	\$500	
75330	Emergency Dispatch	\$0	\$150,980	\$0	\$10	
75350	Other Prof/Tech Services	\$35,387	\$29,600	\$29,600	\$30,300	
75770	Misc Contractual Obligations	\$11,984	\$16,380	\$16,380	\$14,900	
76010	Trfr to Fleet Services O&M	\$28,539	\$27,600	\$27,600	\$30,330	
76011	Trfr to Fleet Services Reserve	\$33,040	\$29,280	\$29,280	\$22,730	
Cost Center Total: 130 - Criminal Investigations/Juvenile		\$1,942,567	\$1,972,440	\$1,982,150	\$2,036,200	

101.210.140 Police Records

COST CENTER DESCRIPTION

The Police Records Unit is the depository of all routine records compiled, written and otherwise generated. These include incident reports, accident reports, traffic and parking citations, criminal complaints and warrants, dispatch records, archiving of records and similar items. In addition, the unit is responsible for the control of recovered property and all evidence seized at the scene of crimes, parking ticket collection system, administrative towing program and staffing of the front desk.

Expenditure Detail by Cost Center					
Account		Actual	Amended	Year-End	Board
Number	Account Description	2024	Budget	Estimate	Approved
		2024	2025	2025	2026
Fund: 101 - General Fund					
Department: 210 - Police					
Cost Center: 140 - Police Records					
71110	Regular Wages	\$381,838	\$398,890	\$424,680	\$432,560
71120	Part-Time Wages	\$28,654	\$62,990	\$78,260	\$78,250
71140	Overtime Wages	\$26,436	\$15,000	\$10,000	\$10,000
71210	PPO-Health Insurance	\$19,023	\$18,690	\$18,690	\$21,290
71220	PPO Plus-Health Insurance	\$8,376	\$31,360	\$8,750	\$9,890
71240	Blue Advantage-Health Insurance	\$51,347	\$36,960	\$54,710	\$60,440
71410	Life Insurance	\$575	\$1,260	\$1,230	\$1,260
71420	Social Security	\$24,749	\$28,570	\$31,120	\$31,610
71430	Medicare	\$5,973	\$6,680	\$7,280	\$7,390
71440	Employer Pension Contribution-IMRF	\$28,511	\$27,380	\$29,820	\$35,690
73110	Operating Supplies	\$8,202	\$8,000	\$8,000	\$8,000
73120	Uniforms	\$7,853	\$5,850	\$5,850	\$6,500
75010	Training & Travel	\$504	\$2,000	\$2,000	\$2,000
75020	Dues & Subscriptions	\$40	\$80	\$80	\$80
75210	Printing & Binding	\$0	\$0	\$500	\$500
75350	Other Prof/Tech Services	\$103,631	\$73,600	\$73,600	\$73,600
75710	Computer Service Contracts	\$146,265	\$134,690	\$134,690	\$134,700
75730	Equipment Service Contracts	\$0	\$1,000	\$1,000	\$2,100
Cost Center Total: 140 - Police Records		\$841,977	\$853,000	\$890,260	\$915,860

101.210.170 Police Traffic Services

COST CENTER DESCRIPTION

The traffic services program provides a specialization in both first and second division vehicle enforcement. It also focuses on the safe movement of the public and the preservation of the Village’s infrastructure through special permits. Traffic services also manage grant programs designed to enhance enforcement efforts to reduce crashes caused by speed or other rules of the road violations including driver impairment. The traffic unit also coordinates the Child Safety Seat Inspection Program.

In addition, the program provides regulatory enforcement and safety programs and evaluates and initiates legislation in the interest of public safety and the preservation of property. The program also provides guidance to state, county and municipal agencies concerning truck law enforcement procedures.

Expenditure Detail by Cost Center					
Account		Actual	Amended Budget	Year-End Estimate	Board Approved
Number	Account Description	2024	2025	2025	2026
Fund: 101 - General Fund					
Department: 210 - Police					
Cost Center: 170 - Traffic Services					
71110	Regular Wages	\$202,342	\$167,660	\$304,470	\$304,480
71140	Overtime Wages	\$11,119	\$8,000	\$8,000	\$8,000
71210	PPO-Health Insurance	\$20,810	\$22,320	\$22,320	\$25,240
71240	Blue Advantage-Health Insurance	\$16,541	\$10,550	\$26,200	\$27,170
71410	Life Insurance	\$150	\$270	\$450	\$450
71430	Medicare	\$3,034	\$2,460	\$4,470	\$4,470
73110	Operating Supplies	\$8,372	\$9,000	\$9,000	\$9,000
73120	Uniforms	\$791	\$2,250	\$2,250	\$2,250
75010	Training & Travel	\$660	\$400	\$400	\$400
75330	Emergency Dispatch	\$0	\$22,650	\$0	\$10
75350	Other Prof/Tech Services	\$106,791	\$10	\$0	\$0
Cost Center Total: 170 - Traffic Services		\$370,609	\$245,570	\$377,560	\$381,470

205.210.175 DUI Equipment/Technology

COST CENTER DESCRIPTION

On June 28, 2006, the Governor signed SB1088 into law as Public Act 94-0963. This law provides greater latitude to local police departments in combating alcohol related crimes. Currently, local agencies can receive \$100 for the first DUI conviction and \$200 for a second conviction. The Act allows local agencies to use the funds for enforcement and prevention of impaired driving, including the purchase of law enforcement equipment and commodities, police officer training, education, salaries, checkpoints, saturation patrols, and sting operations. Prior to this time, the money could only be used to purchase equipment. In order to adequately track and monitor the expenditures associated with this revenue so that only expenditures permitted under the expanded legislation are incurred, the Village established this cost center in the FYE 2008 budget.

Expenditure Detail by Cost Center					
Account		Actual	Amended Budget	Year-End Estimate	Board Approved
Number	Account Description	2024	2025	2025	2026
Fund: 205 - DUI Equipment/Tech Fund					
Department: 210 - Police					
Cost Center: 175 - DUI Equipment/Technology					
73110	Operating Supplies	\$5,156	\$25,000	\$25,000	\$25,000
73920	Technology Equipment	\$74,240	\$37,820	\$37,820	\$38,000
Cost Center Total: 175 - DUI Equipment/Technology		\$79,396	\$62,820	\$62,820	\$63,000

210.210.115 Police Donations

COST CENTER DESCRIPTION

This cost center was established to account for Police Department donations from citizens and businesses. Revenue for this cost center is derived from donations given to the department. Typically, items purchased under this cost center are one-time only supplies and equipment, employee recognition or to offset costs such as those associated with the citizen’s police academy. These items or services benefit the department and/or the citizens of Lombard.

Expenditure Detail by Cost Center					
Account		Actual	Amended Budget	Year-End Estimate	Board Approved
Number	Account Description	2024	2025	2025	2026
Fund: 210 - Police Donation Fund					
Department: 210 - Police					
Cost Center: 115 - Donations					
73110	Operating Supplies	\$1,423	\$1,000	\$1,000	\$1,000
Cost Center Total: 115 - Donations		\$1,423	\$1,000	\$1,000	\$1,000

235.210.118 Police Grants

COST CENTER DESCRIPTION

The Standards for Audit and Governmental Organizations Programs issued by the U.S. General Accounting Office establishes requirements for accounting for grant funds received from other agencies and disbursed by the Village of Lombard. This cost center has been established to provide for the proper accounting of revenues and expenditures for police activities and functions for which grant funding has been provided and to facilitate the auditing of these funds.

Expenditure Detail by Cost Center						
Account		Actual	Amended Budget	Year-End Estimate	Board Approved	
Number	Account Description	2024	2025	2025	2026	
Fund: 235 - Grant Fund						
Department: 210 - Police						
Cost Center: 118 - Grants						
71140	Overtime Wages	\$140,238	\$110,000	\$110,000	\$110,000	
73110	Operating Supplies	\$4,003	\$4,000	\$7,000	\$7,000	
73120	Uniforms	\$6,187	\$0	\$0	\$0	
73920	Technology Equipment	\$12,000	\$50,000	\$50,000	\$50,000	
75010	Training & Travel	\$9,292	\$0	\$1,500	\$0	
75350	Other Prof/Tech Services	\$1,000	\$4,500	\$4,500	\$4,500	
Cost Center Total: 118 - Grants		\$172,721	\$168,500	\$173,000	\$171,500	

240.210.112 Police Department Village Events

COST CENTER DESCRIPTION

To enhance and provide additional support personnel necessary to address safety and security of Village special functions including, but not limited to, the Lilac Time Art and Craft Show, Cruise Nights, Lilac Day Parade, and Taste of Lombard/4th of July celebrations. Funding for these activities is provided by Hotel/Motel tax revenues.

Expenditure Detail by Cost Center						
Account		Actual	Amended Budget	Year-End Estimate	Board Approved	
Number	Account Description	2024	2025	2025	2026	
Fund: 240 - Hotel/Motel Tax Fund						
Department: 210 - Police						
Cost Center: 112 - Village Events						
71110	Regular Wages	\$17,792	\$22,490	\$23,310	\$23,230	
71140	Overtime Wages	\$71,300	\$45,000	\$45,000	\$45,000	
71220	PPO Plus-Health Insurance	\$227	\$230	\$230	\$250	
71240	Blue Advantage-Health Insurance	\$1,868	\$1,610	\$1,610	\$1,670	
71410	Life Insurance	\$11	\$20	\$20	\$20	
71430	Medicare	\$265	\$330	\$340	\$340	
73110	Operating Supplies	\$2,600	\$0	\$0	\$0	
Cost Center Total: 112 - Village Events		\$94,063	\$69,680	\$70,510	\$70,510	

245.210.191 Federal Seizures

COST CENTER DESCRIPTION

This cost center provides for the Narcotics Fund cost of various projects funded through Federal Narcotics forfeitures. These expenditures must conform to provisions of Federal Law. Expenditures will be made only from revenues received from Federal forfeitures. Purchases from this cost center will be subject to review by the Police Department as needs may warrant.

Expenditure Detail by Cost Center						
Account		Actual	Amended Budget	Year-End Estimate	Board Approved	
Number	Account Description	2024	2025	2025	2026	
Fund: 245 - Federal Seizure Fund						
Department: 210 - Police						
Cost Center: 191 - Federal Seizures						
71140	Overtime Wages	\$0	\$12,000	\$0	\$0	
73110	Operating Supplies	\$25,841	\$25,000	\$2,500	\$2,500	
73920	Technology Equipment	\$27,222	\$25,000	\$13,620	\$15,000	
78011	Leased Assets - Principal	\$32,608	\$0	\$0	\$0	
78021	Leased Asset - Interest	\$4,892	\$0	\$0	\$0	
Cost Center Total: 191 - Federal Seizures		\$90,563	\$62,000	\$16,120	\$17,500	

250.210.192 State Seizures

COST CENTER DESCRIPTION

This cost center provides for the Narcotics Fund cost of various Village projects. Costs shown in this account are funded through State narcotics seizures and conform with provisions of State Law restricting certain expenditures. Expenditures will be made only upon receipt of appropriate revenue. Purchases from this cost center will be subject to review by the Police Department as needs may warrant.

Expenditure Detail by Cost Center					
Account		Actual	Amended Budget	Year-End Estimate	Board Approved
Number	Account Description	2024	2025	2025	2026
Fund: 250 - State Seizure Fund					
Department: 210 - Police					
Cost Center: 192 - State Seizures					
73110	Operating Supplies	\$0	\$15,000	\$15,000	\$15,000
Cost Center Total: 192 - State Seizures		\$0	\$15,000	\$15,000	\$15,000

270.210.116 Risk Management

COST CENTER DESCRIPTION

This cost center reflects the cost for Police Department's general liability, workers' compensation, and unemployment insurance coverage. The Village's workers' compensation insurance and general liability insurance is chosen with the assistance of a qualified broker and risk management consultant. The workers' compensation claims are covered by the Village up to a certain dollar amount. Excess insurance coverage then covers any remaining amount above the stop-loss limit. General liability is covered in the same way and the overall stop-loss limit is an aggregate amount between workers compensation and general liability. A third party administrator aids the Village in administering general liability and workers compensation claims. The Village provides a risk program that identifies and provides training to key areas of risk in the work place.

Expenditure Detail by Cost Center					
Account		Actual	Amended Budget	Year-End Estimate	Board Approved
Number	Account Description	2024	2025	2025	2026
Fund: 270 - Liability Insurance Fund					
Department: 210 - Police					
Cost Center: 116 - Risk Management					
75350	Other Prof/Tech Services	\$28,027	\$29,150	\$28,180	\$29,740
75510	Insurance Premiums	\$195,419	\$208,780	\$213,490	\$228,270
75530	Insurance Claims-General Liability	\$0	\$6,920	\$1,690	\$4,860
75540	Insurance Claims-Auto	\$0	\$14,790	\$2,440	\$15,370
75550	Insurance Claims-Property	\$0	\$4,430	\$2,250	\$3,360
75560	Insurance Claims-Workers Compensation	\$165,038	\$284,870	\$144,690	\$312,370
76010	Trfr to Fleet Services O&M	\$3,161	\$0	\$0	\$0
Cost Center Total: 116 - Risk Management		\$391,645	\$548,940	\$392,740	\$593,970

285.210.110 Opioid Settlement Administration

COST CENTER DESCRIPTION

Pursuant to Section V.B.2 of the Distributor Settlement Agreement, Section VI.B.2 of the Janssen Settlement Agreement, Section VIII.B-C of the Allergan Public Global Opioid Settlement Agreement, Section VIII.B-C of the Teva Global Opioid Settlement Agreement, Section V.B of the Walmart Settlement Agreement, Section V.B of the CVS Settlement Agreement, and Section V.B of the Walgreens Settlement Agreement, (“Settlement Agreements”), it is the intent of the Parties that all payments disbursed from the Settlement Fund to the Settling States and Participating Subdivisions be used for Opioid Remediation, subject to certain exceptions.

Priority strategies include:

- Funding for media campaigns to prevent opioid use
- Funding for evidence-based prevention programs in schools
- Funding for medical provider education and outreach regarding best prescribing practices for opioids consistent with the 2016 CDC guidelines, including providers at hospitals
- Funding for community drug disposal programs
- Funding and training for first responders to participate in pre-arrest diversion programs, post-overdose response teams, or similar strategies that connect at-risk individuals

Expenditure Detail by Cost Center						
Account		Actual	Amended Budget	Year-End Estimate	Board Approved	
Number	Account Description	2024	2025	2025	2026	
Fund: 285 - Opioid Settlement Fund						
Department: 210 - Police						
Cost Center: 110 - Administration						
75770	Misc Contractual Obligations	\$1,667	\$20,000	\$20,000	\$20,000	
Cost Center Total: 110 - Administration		\$1,667	\$20,000	\$20,000	\$20,000	