



Village of Lombard

Available Properties - Roosevelt Road Area

700-720 S Main Street/Lombard Center

Building Type Retail
Building Status Built 1983
Zoning B1PD
Land Area 0.86 acres
Stories 1.00
Building SF 13,282
SF Available 1,200
Contiguous SF 1,200
Smallest SF 1,200
Rent/SF/Yr \$12/nnn
Expenses
Parking 47 spaces
For Sale
Contact Alpha Realty, Louis Papadakos, 630-773-2150

Property Type Retail
Building Notes:

Site Image

Location Map



Demographics

Butterfield Area			Median
	2016	2021	Household
	Population	Population	Income
1-mile	9,603	9,963	\$ 65,623
3-mile	86,505	87,714	\$ 73,474
5-mile	266,386	268,520	\$ 78,795

Source: The Nielsen Co. Data are estimates.



Village of Lombard

Available Properties - Roosevelt Road Area

660 E Roosevelt Rd

Building Type Office
Building Status Built 1991
Zoning B4A
Land Area
Stories 1.00
Building SF 5,200
SF Available 2,500
Contiguous SF 2,500
Smallest SF 2,500
Rent/SF/Yr \$12/nnn

Property Type Office

Building Notes:
Medical office

Expenses

Parking

For Sale Yes

Contact Picchetti Dental Care, 630-627-7651

Site Image

Location Map



Demographics

Butterfield Area			
	2016	2021	Median
	Population	Population	Household Income
1-mile	9,603	9,963	\$ 65,623
3-mile	86,505	87,714	\$ 73,474
5-mile	266,386	268,520	\$ 78,795

Source: The Nielsen Co. Data are estimates.



Village of Lombard

Available Properties - Roosevelt Road Area

821-881 Parkview Blvd

Building Type Office

Property Type Office

Building Status

Building Notes:

Zoning OPD

Land Area 7

Stories 1.00

Building SF 79,269

SF Available 28,000

Contiguous SF 16,900

Smallest SF 11,203

Rent/SF/Yr \$13.95/n

Expenses

Parking

For Sale No

Contact CBRE, Daniel Graham, 847-706-4032

Site Image

Location Map



Demographics

Butterfield Area			
	2016	2021	Median
	Population	Population	Household Income
1-mile	9,603	9,963	\$ 65,623
3-mile	86,505	87,714	\$ 73,474
5-mile	266,386	268,520	\$ 78,795

Source: The Nielsen Co. Data are estimates.



Village of Lombard

Available Properties - Roosevelt Road Area

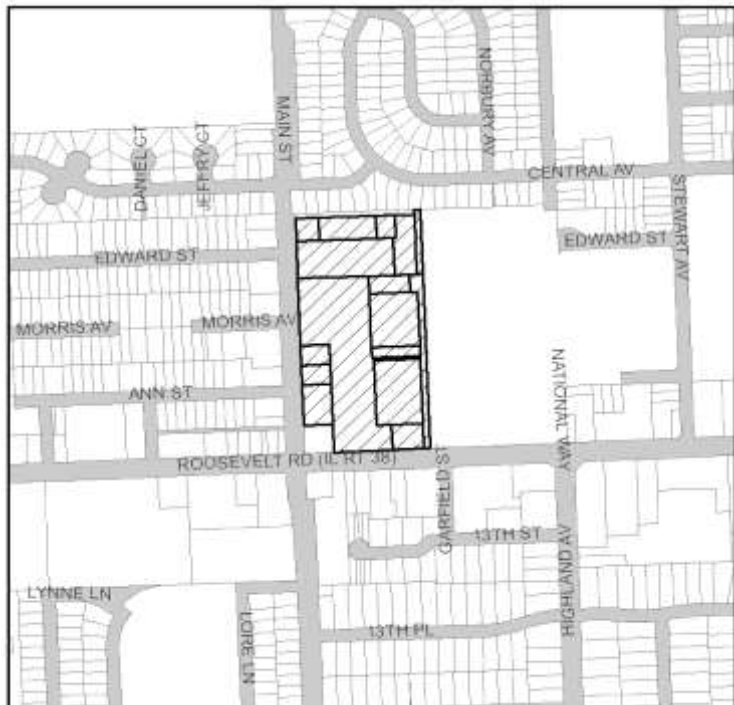
1103-1177 S Main Street/Lombard Pines Plaza

Building Type	Retail (Community Ctr.)	Property Type	Retail
Building Status	Built 1965, Renov 1999	Building Notes:	Anchored by Jewel Osco and Enchanted Castle
Zoning	B4APD		
Land Area	19.5 acres		
Stories	1.00		
Building SF	140,000		
SF Available	52,000		
Contiguous SF	52,000		
Smallest SF	52,000		
Rent/SF/Yr	\$5.00-\$12.00/nnn		
Expenses			
Parking	1100 surface spaces available		
For Sale	No		
Contact	The Sackar Company, David Sackar, 773-348-7777		

Site Image



Location Map



Demographics

Roosevelt Area			
	2016	2021	Median
	Population	Population	Household Income
1-mile	14,944	15,209	\$ 66,563
3-mile	98,526	99,737	\$ 73,884
5-mile	275,166	278,404	\$ 75,636

Source: The Nielsen Co. Data are estimates.



Village of Lombard

Available Properties - Roosevelt Road Area

837 S Westmore/Eastgate Shopping Center

Building Type Retail
Building Status Built 1959, Renov 2000
Zoning B3PD
Land Area 3.47 acres
Stories 1.00
Building SF 129,101
SF Available 9,000
Contiguous SF 2,976
Smallest SF 1,600
Rent/SF/Yr \$13/nnn
Expenses
Parking 800 surface spaces available
For Sale No
Contact Greenstone Partners, Leo Solarte,
 312-234-0387

Property Type Retail

Building Notes:

- Recently remodeled center
- Enjoys high visibility along a busy thoroughfare
- Hardware store and bank anchor a mix of local tenants
- Located in a densely populated residential area
- Out-parcel opportunity available
- Will build to suit for appropriate user

Site Image



Location Map



Demographics

Roosevelt Area			
	2016	2021	Median
	Population	Population	Household Income
1-mile	14,944	15,209	\$ 66,563
3-mile	98,526	99,737	\$ 73,884
5-mile	275,166	278,404	\$ 75,636

Source: The Nielsen Co. Data are estimates.



Village of Lombard

Available Properties - Roosevelt Road Area

401-581 E Roosevelt Road/High Point Centre

Building Type Retail

Building Status Built 1992

Zoning B4APD

Land Area 36 acres

Stories 1.00

Building SF 239,892

SF Available 49,304

Contiguous SF 36,416

Smallest SF 12,888

Rent/SF/Yr

Expenses

Parking 1,074 surface spaces available

For Sale No

Contact Brixmoor, Brad Ratajczak, 847-562-4130

Property Type Retail

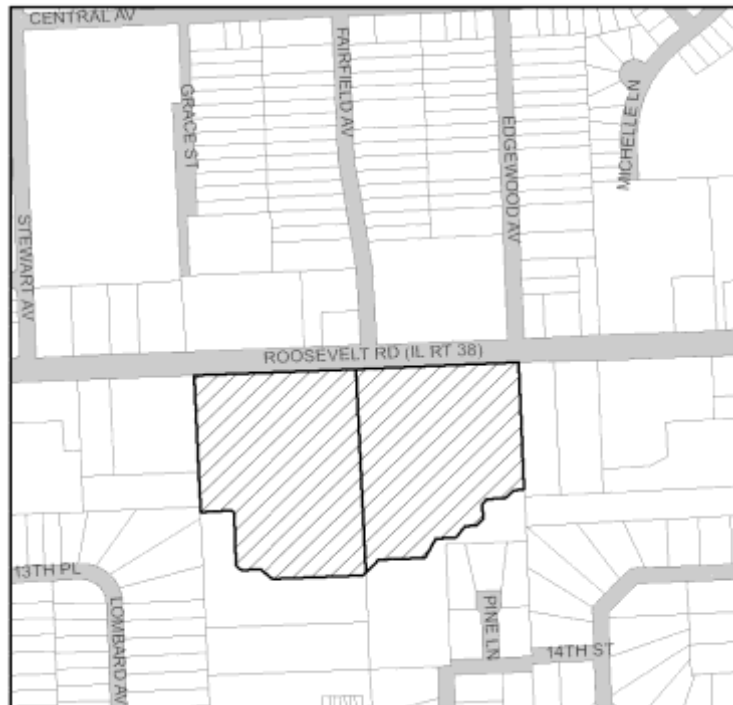
Building Notes:

Located north of I-88 and east of I-355 on Roosevelt Road, just east of Highland Avenue
Anchored by Babies R Us, Office Depot, and Ultra Foods
64,500 vpd

Site Image



Location Map



Demographics

Roosevelt Area			
	2016	2021	Median
	Population	Population	Household Income
1-mile	14,944	15,209	\$ 66,563
3-mile	98,526	99,737	\$ 73,884
5-mile	275,166	278,404	\$ 75,636

Source: The Nielsen Co. Data are estimates.



Village of Lombard

Available Properties - Roosevelt Road Area

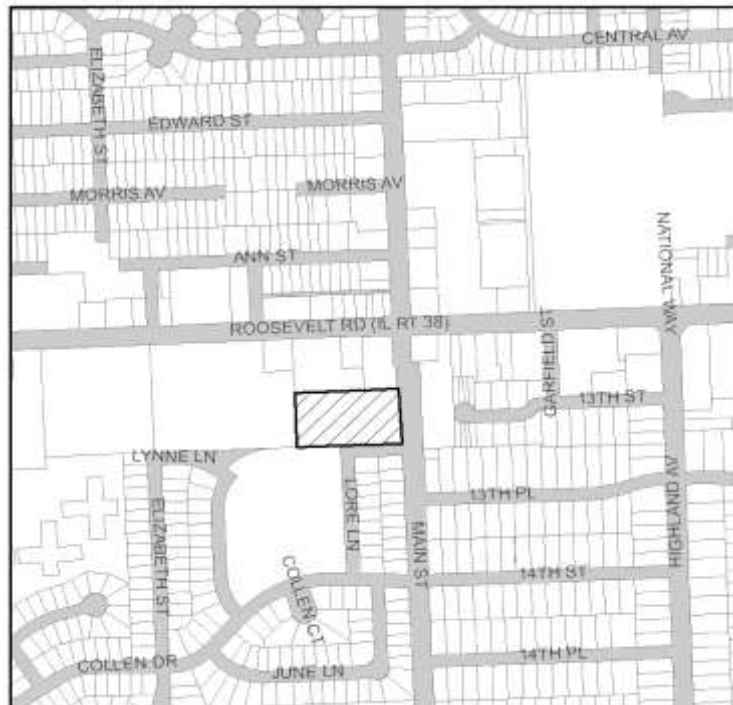
1300-1398 S Main Street/Omni Plaza

Building Type	Retail (Strip Ctr.)	Property Type	Retail
Building Status	Existing	Building Notes:	Corner lot Signage
Zoning	B4A		
Land Area			
Stories	1.00		
Building SF	40,000		
SF Available	1,760		
Contiguous SF	1,600		
Smallest SF	1,160		
Rent/SF/Yr	\$14/nnn		
Expenses			
Parking			
For Sale	No		
Contact	Key Investment & Mngt, Kimberly Hess, 630-932-5757 x208		

Site Image



Location Map



Demographics

Roosevelt Area			
	2016	2021	Median
	Population	Population	Household Income
1-mile	14,944	15,209	\$ 66,563
3-mile	98,526	99,737	\$ 73,884
5-mile	275,166	278,404	\$ 75,636

Source: The Nielsen Co. Data are estimates.



Village of Lombard

Available Properties - Roosevelt Road Area

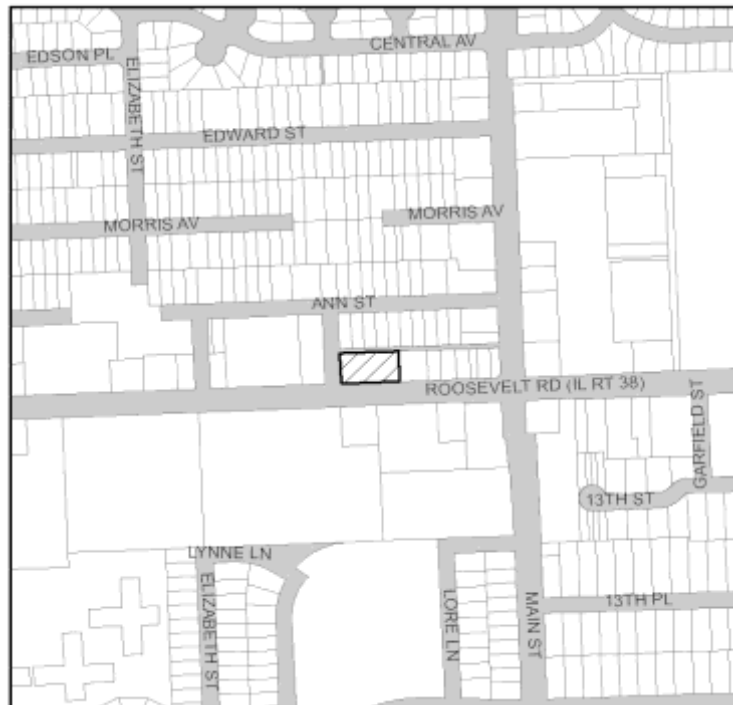
34-54 W Roosevelt Road/Lincoln Plaza

Building Type	Retail (Strip Ctr.)	Property Type	Retail
Building Status	Built 1963	Building Notes:	
Zoning	B4A		
Land Area	.73 acres		
Stories	1.00		
Building SF	18,000		
SF Available	4,400		
Contiguous SF	4,400		
Smallest SF	1,500		
Rent/SF/Yr	\$13.50/nnn		
Expenses			
Parking	40 surface spaces available		
For Sale	No		
Contact	SVN/Landmark, Joel Miller 630-938-4950		

Site Image



Location Map



Demographics

Roosevelt Area			
	2016	2021	Median
	Population	Population	Household Income
1-mile	14,944	15,209	\$ 66,563
3-mile	98,526	99,737	\$ 73,884
5-mile	275,166	278,404	\$ 75,636

Source: The Nielsen Co. Data are estimates.



Village of Lombard

Available Properties - Roosevelt Road Area

1210-1238 S Highland Avenue/Highland Retail Mall

Building Type Retail (Strip Ctr.)

Building Status Built Jan 1989

Zoning B4A

Land Area 4.28 acres

Stories 1.00

Building SF 9,252

SF Available 1,100

Contiguous SF 1,100

Smallest SF 1,100

Rent/SF/Yr \$17.50/nnn

Expenses

Parking

For Sale

Contact Rossi Real Estate, Mark Sagerstrom,
630-652-2999

Property Type Retail

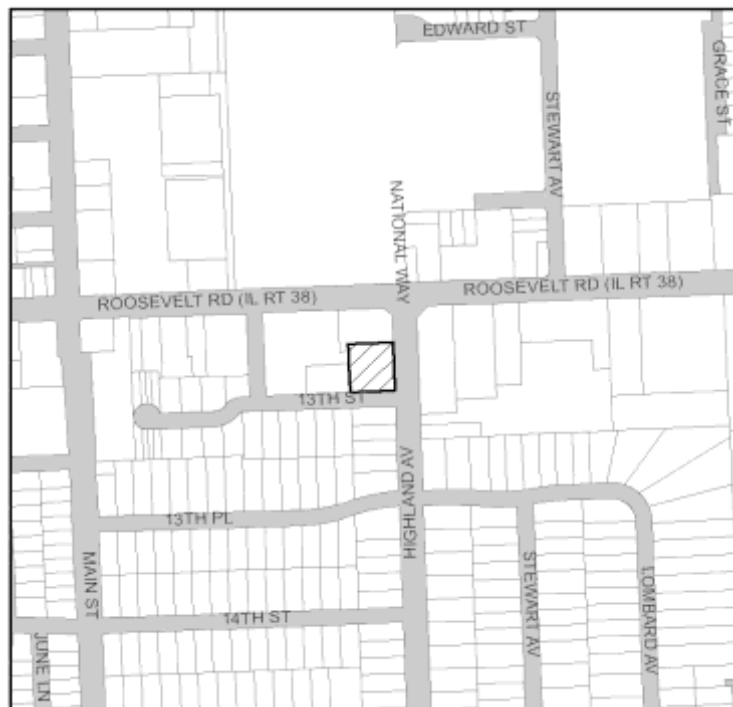
Building Notes:

- Busy intersection of Highland Ave. and Roosevelt Road
- Easy access to I-88, hotels and restaurants

Site Image



Location Map



Demographics

Roosevelt Area			
	2016	2021	Median
	Population	Population	Household Income
1-mile	14,944	15,209	\$ 66,563
3-mile	98,526	99,737	\$ 73,884
5-mile	275,166	278,404	\$ 75,636

Source: The Nielsen Co. Data are estimates.



Village of Lombard

Available Properties - Roosevelt Road Area

820-860 Parkview Boulevard/Woodlake Business Park

Building Type Class B Office
Building Status Built Aug 1996
Zoning OPD
Land Area 2.6 acres
Stories 1.00
Building SF 28,075
SF Available 5,202
Contiguous SF 5,202
Smallest SF 5,202
Rent/SF/Yr \$13.95/n
Expenses
Parking 120 surface spaces available
For Sale No
Contact CBRE, Daniel Graham, 847-706-4032

Property Type Office

Building Notes:

- Typical Floor size: 28,075 SF
- Spectacular corporate building
- Conveniently located just minutes north of the Roosevelt Road interchange on the North-South Tollway (I-355)
- Handicap accessible
- Access to public transportation
- Tenant HVAC

Site Image



Location Map



Demographics

Roosevelt Area			
	2016	2021	Median
	Population	Population	Household Income
1-mile	14,944	15,209	\$ 66,563
3-mile	98,526	99,737	\$ 73,884
5-mile	275,166	278,404	\$ 75,636

Source: The Nielsen Co. Data are estimates.



Village of Lombard

Available Properties - Roosevelt Road Area

901-939 Parkview Boulevard/Woodlake Corporate Park

Building Type Class B Office

Building Status Built 1989

Zoning OPD

Land Area 3.28 acres

Stories 1.00

Building SF 40,225

SF Available 25,000

Contiguous SF 14,358

Smallest SF 1,502

Rent/SF/Yr \$13.95/n

Expenses

Parking 161 surface spaces available

For Sale No

Contact CBRE, Daniel Graham, 847-706-4032

Property Type Office

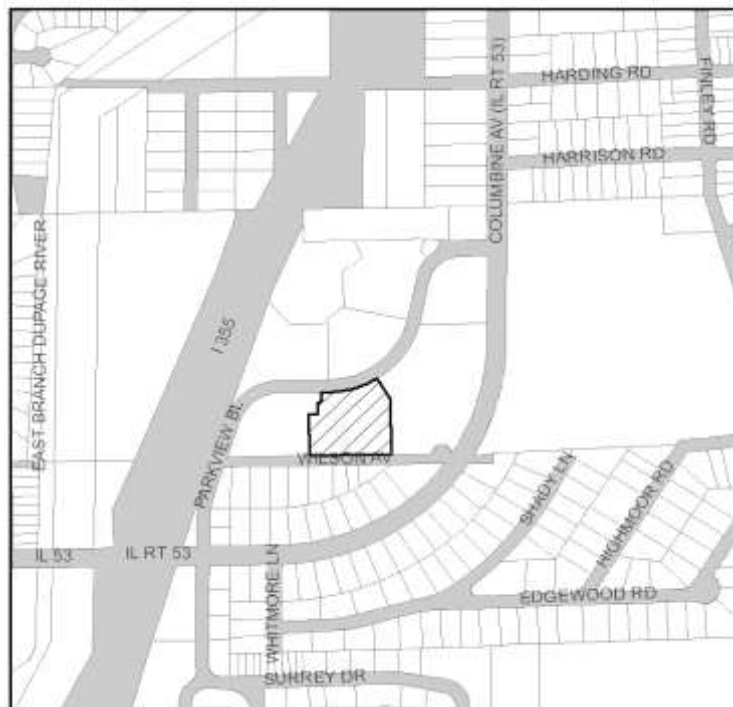
Building Notes:

- Typical Floor plan: 40,225 SF
 - Ideal for light assembly, distribution and warehouse operations
 - Provisions for drive-in doors have been made for to respond to industrial users
 - Individual HVAC with energy saving programmable thermostats
 - Located 2 minutes from I-355 and I-88
 - Restaurants, hotel, golf and shopping nearby
 - Handicap accessible
 - Building divisible to 1,000 sf
- Sprinklers

Site Image



Location Map



Demographics

Butterfield Area			
	2016	2021	Median
	Population	Population	Household Income
1-mile	9,603	9,963	\$ 65,623
3-mile	86,505	87,714	\$ 73,474
5-mile	266,386	268,520	\$ 78,795

Source: The Nielsen Co. Data are estimates.



Village of Lombard

Available Properties - Roosevelt Road Area

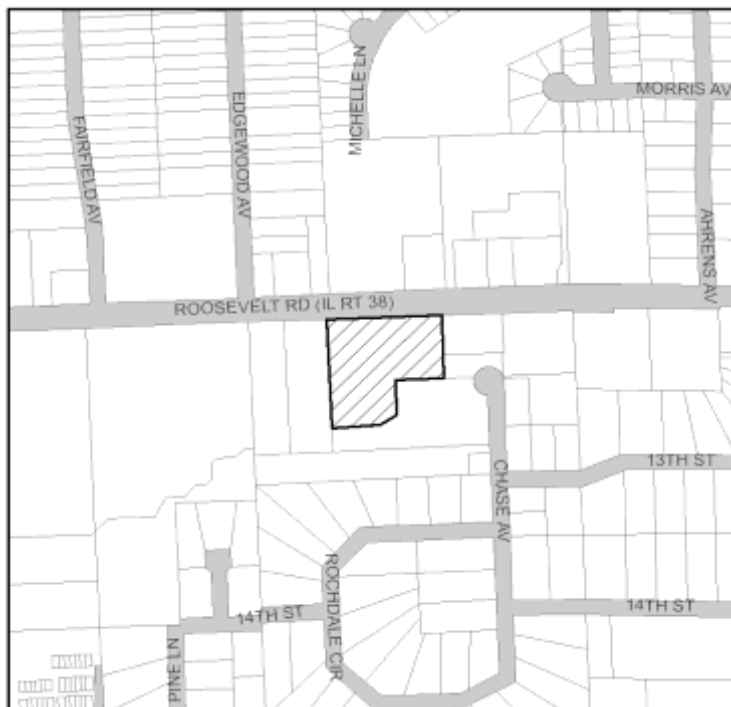
701-743 E Roosevelt Road/Village Plaza

Building Type	Retail/(Strip Ctr)	Property Type	Retail
Building Status	Built 1976, renovated 2011	Building Notes:	
Zoning	B4A		
Land Area	4.20 acres		
Stories	1.00		
Building SF	21,000		
SF Available	2,000		
Contiguous SF	1,000		
Smallest SF	1,000		
Rent/SF/Yr	\$18/nnn		
Expenses			
Parking	90 spaces		
For Sale	No		
Contact	CBRE, Lynne Brackett, 630-573-7035		

Site Image



Location Map



Demographics

Roosevelt Area			
	2016	2021	Median
	Population	Population	Household Income
1-mile	14,944	15,209	\$ 66,563
3-mile	98,526	99,737	\$ 73,884
5-mile	275,166	278,404	\$ 75,636

Source: The Nielsen Co. Data are estimates.



Village of Lombard

Available Properties - Roosevelt Road Area

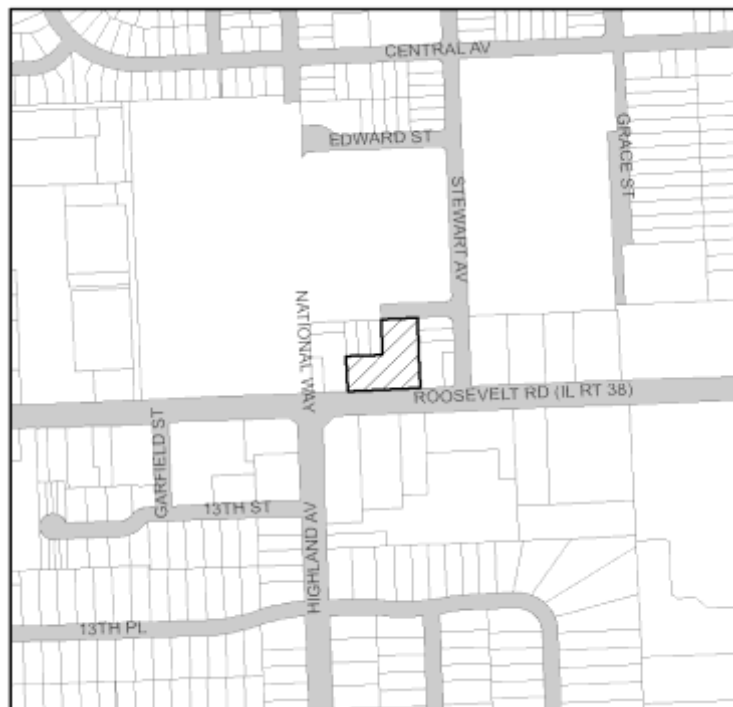
230-240 E Roosevelt Rd/Lazy Boy Furniture Galler

Building Type	Retail/General Freestanding	Property Type	Retail
Building Status	Built 1973	Building Notes:	<ul style="list-style-type: none"> •Freestanding retail building
Zoning	B4A		
Land Area	1.55 AC		
Stories	1.00		
Building SF	24,000		
SF Available	24,000		
Contiguous SF	24,000		
Smallest SF	24,000		
Rent/SF/Yr	\$10/nnn		
Expenses			
Parking	20 Surface Spaces available		
For Sale			
Contact	Edgemark Commercial Real Estate Services LLC, Matthew Smetana, 630-472-1010		

Site Image



Location Map



Demographics

Roosevelt Area			
	2016	2021	Median
	Population	Population	Household Income
1-mile	14,944	15,209	\$ 66,563
3-mile	98,526	99,737	\$ 73,884
5-mile	275,166	278,404	\$ 75,636

Source: The Nielsen Co. Data are estimates.



Village of Lombard

Available Properties - Roosevelt Road Area

33 W Roosevelt Rd

Building Type Office
Building Status Built 1975
Zoning B4A
Land Area
Stories 1.00
Building SF 8,500
SF Available 4,553
Contiguous SF 2,933
Smallest SF 1,620
Rent/SF/Yr \$13/mg

Property Type Office

Building Notes:

Expenses

Parking

For Sale No

Contact Sabet Siddiqui, 815-756-5255

Site Image



Location Map



Demographics

Roosevelt Area			
	2016	2021	Median
	Population	Population	Household Income
1-mile	14,944	15,209	\$ 66,563
3-mile	98,526	99,737	\$ 73,884
5-mile	275,166	278,404	\$ 75,636

Source: The Nielsen Co. Data are estimates.



Village of Lombard

Available Properties - Roosevelt Road Area

880 E Roosevelt Road

Building Type Retail
Building Status vacant land
Zoning B4A
Land Area 5 acres
Stories 0.00
Building SF 0
SF Available 0
Contiguous SF 0
Smallest SF 0
Rent/SF/Yr
Expenses
Parking
For Sale
Contact Cory Tanzer, Option Realty, 312-218-4483

Property Type Retail
Building Notes:
 vacant land

Site Image

Location Map



Demographics

Roosevelt Area			
	2016	2021	Median
	Population	Population	Household Income
1-mile	14,944	15,209	\$ 66,563
3-mile	98,526	99,737	\$ 73,884
5-mile	275,166	278,404	\$ 75,636

Source: The Nielsen Co. Data are estimates.



Village of Lombard

Available Properties - Roosevelt Road Area

330 E Roosevelt Rd

Building Type Retail
Building Status Built 1950
Zoning B4A
Land Area 1 acres
Stories 2.00
Building SF 20,587
SF Available 400
Contiguous SF 400
Smallest SF 400
Rent/SF/Yr \$12/mg
Expenses
Parking 48 spaces
For Sale
Contact Remax Action, Indu Sethi 630-968-2600

Property Type Retail

Building Notes:

Site Image

Location Map



Demographics

Roosevelt Area			
	2016	2021	Median
	Population	Population	Household Income
1-mile	14,944	15,209	\$ 66,563
3-mile	98,526	99,737	\$ 73,884
5-mile	275,166	278,404	\$ 75,636

Source: The Nielsen Co. Data are estimates.



Village of Lombard

Available Properties - Roosevelt Road Area

400-450 E Roosevelt Rd/Carson Center

Building Type Retail
Building Status Built 2004
Zoning B4APD
Land Area 2.5 acres
Stories 1.00
Building SF 45,863
SF Available 16,500
Contiguous SF 12,000
Smallest SF 4,500
Rent/SF/Yr
Expenses
Parking 198 spaces
For Sale
Contact Metro Commercial Real Estate,
 Jonathan Hyman 847-412-9898
 x5015

Property Type Retail
Building Notes:

Site Image



Location Map



Demographics

Roosevelt Area			
	2016	2021	Median
	Population	Population	Household Income
1-mile	14,944	15,209	\$ 66,563
3-mile	98,526	99,737	\$ 73,884
5-mile	275,166	278,404	\$ 75,636

Source: The Nielsen Co. Data are estimates.



Village of Lombard

Available Properties - Roosevelt Road Area

800 E Roosevelt Rd/Lombard Square

Building Type Retail

Building Status Built 1975, renovated 2006

Zoning B4A

Land Area 6.31 acres

Stories 1.00

Building SF 60,843

SF Available 24,500

Contiguous SF 24,500

Smallest SF 24,500

Rent/SF/Yr

Expenses

Parking

For Sale No

Contact CBRE, Lynn Brackett, 630-573-7035

Property Type Retail

Building Notes:

One space available for a new outlet
 1 acre outlet can accommodate a building up to 6,600 square feet
 Signalized intersection

Site Image

Location Map



Demographics

Roosevelt Area			
	2016	2021	Median
	Population	Population	Household Income
1-mile	14,944	15,209	\$ 66,563
3-mile	98,526	99,737	\$ 73,884
5-mile	275,166	278,404	\$ 75,636

Source: The Nielsen Co. Data are estimates.



Village of Lombard

Available Properties - Roosevelt Road Area

1219-1281 S Main Street/Oxford Corners

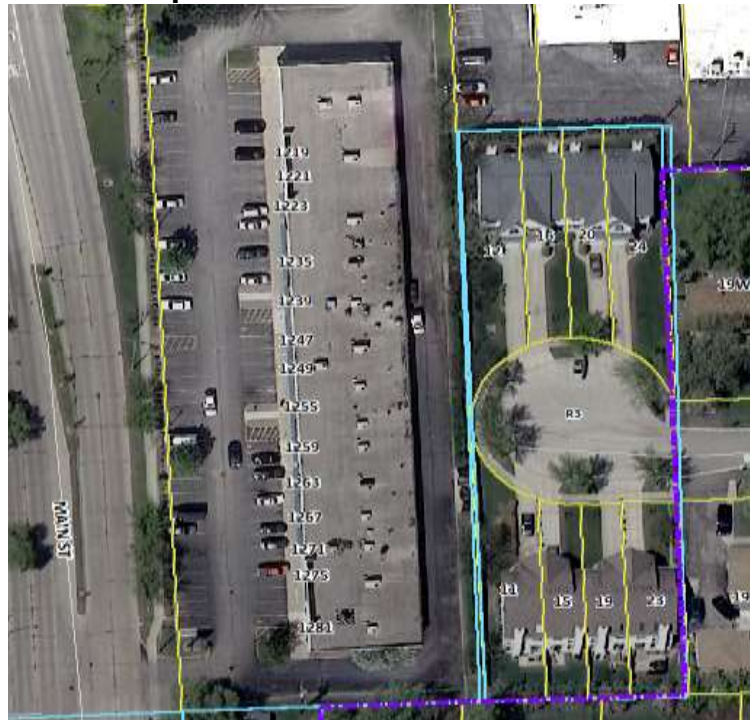
Building Type Retail
Building Status Built 1988
Zoning B4A
Land Area
Stories 1.00
Building SF 22,970
SF Available 3,600
Contiguous SF 2,400
Smallest SF 1,200
Rent/SF/Yr \$16.46/nnn
Expenses
Parking
For Sale
Contact @Properties, Dan Stratis, 312-506-0200

Property Type Retail
Building Notes:
 Retail strip center

Site Image



Location Map



Demographics

Roosevelt Area			
	2016	2021	Median
	Population	Population	Household Income
1-mile	14,944	15,209	\$ 66,563
3-mile	98,526	99,737	\$ 73,884
5-mile	275,166	278,404	\$ 75,636

Source: The Nielsen Co. Data are estimates.