



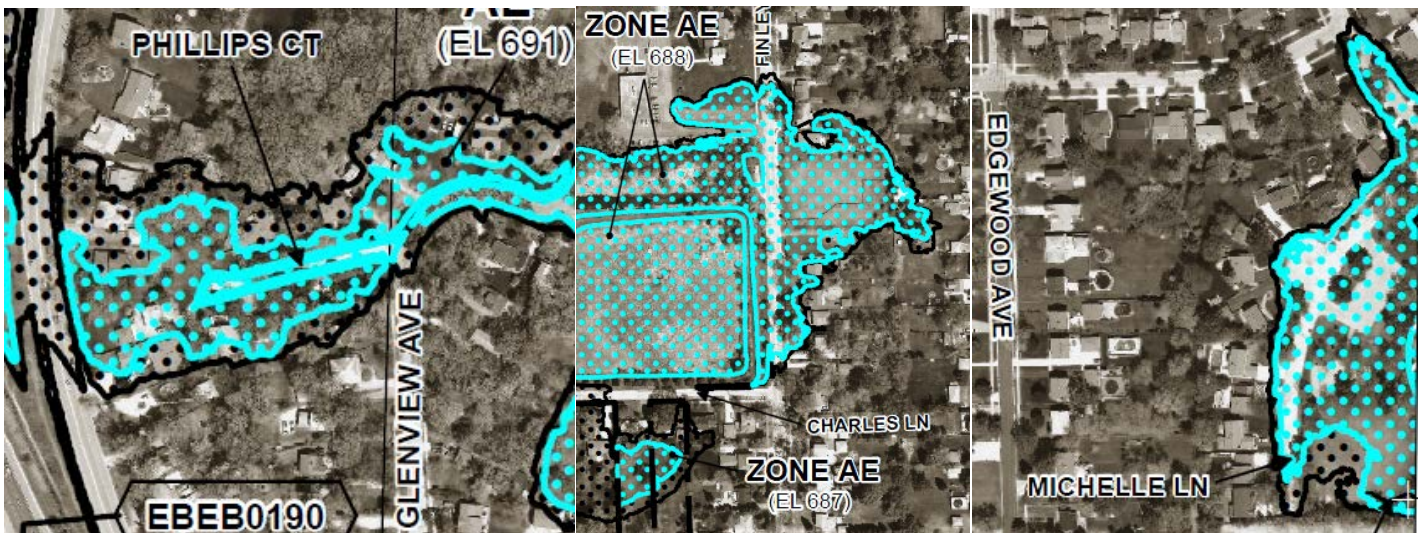
Revised Preliminary Flood Insurance Rate Maps Issued

July 1, 2017

FEMA has issued revised preliminary Flood Insurance Rate Maps (FIRM) for the majority of DuPage County. These preliminary maps bring some additional properties into the regulatory floodplain and they are now considered “best available information” by DuPage County for the purpose of reviewing floodplain permit applications.

The process of finalizing and publishing the maps is anticipated to be completed in 2018. At that time, mortgage companies and insurers will also be required to use them. Below are certain areas as shown on the preliminary maps. The preliminary maps are at <https://hazards.fema.gov/femaportal/prelimdownload/>. Hyperlinks to Lombard’s maps are [17043C0066J](#), [17043C0067J](#), **[17043C0068J](#)**, **[17043C0069J](#)**, **[17043C0156J](#)**, **[17043C0157J](#)**, [17043C0158J](#), [17043C0159J](#), **[17043C0176J](#)**, and [17043C0178J](#). The map numbers in bold are those that show the larger areas in Lombard. Note that these files are large and take time to download.

Questions about the maps may be directed to Jana Bryant, Lombard’s Private Development Engineer, at 630-620-5973 or bryantj@villageoflombard.org.



<https://hazards.fema.gov/femaportal/prelimdownload/prelim/ProductsDownloadServlet?pfiProdId=83127>

