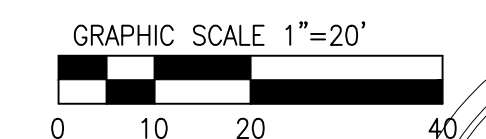
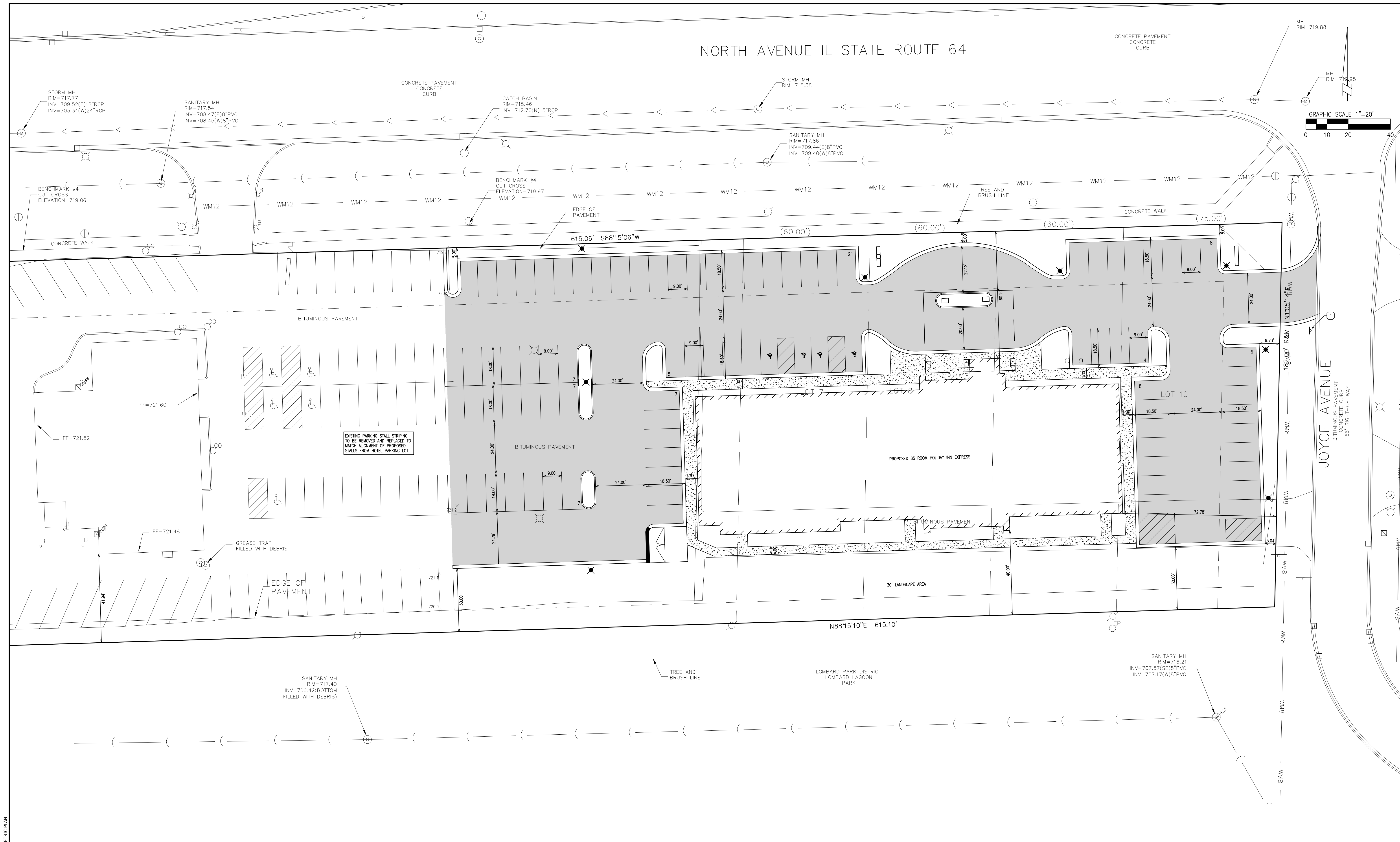


NORTH AVENUE IL STATE ROUTE 64



1-7-20 PER VILLAGE  
12-31-19 REVISED GEOMETRY  
DATE REV REVISION

PRELIMINARY GEOMETRIC  
PLAN  
DRAWN BY: NW  
CHECKED BY: IC  
JOB: 20572  
DATE: 12/31/19

HOLIDAY INN EXPRESS  
LOMBARD, ILLINOIS

**GEOTECH INC.**  
CONSULTING ENGINEERS - LAND SURVEYORS  
1207 CEDARWOOD DRIVE CREST HILL, ILLINOIS 60403 815/730-1010

20572

EXISTING PARKING STALL STRIPING TO BE REMOVED AND REPLACED TO MATCH ALIGNMENT OF PROPOSED STALLS FROM HOTEL PARKING LOT

CONSTRUCTION NOTES  
1 NO RIGHT TURN SIGN

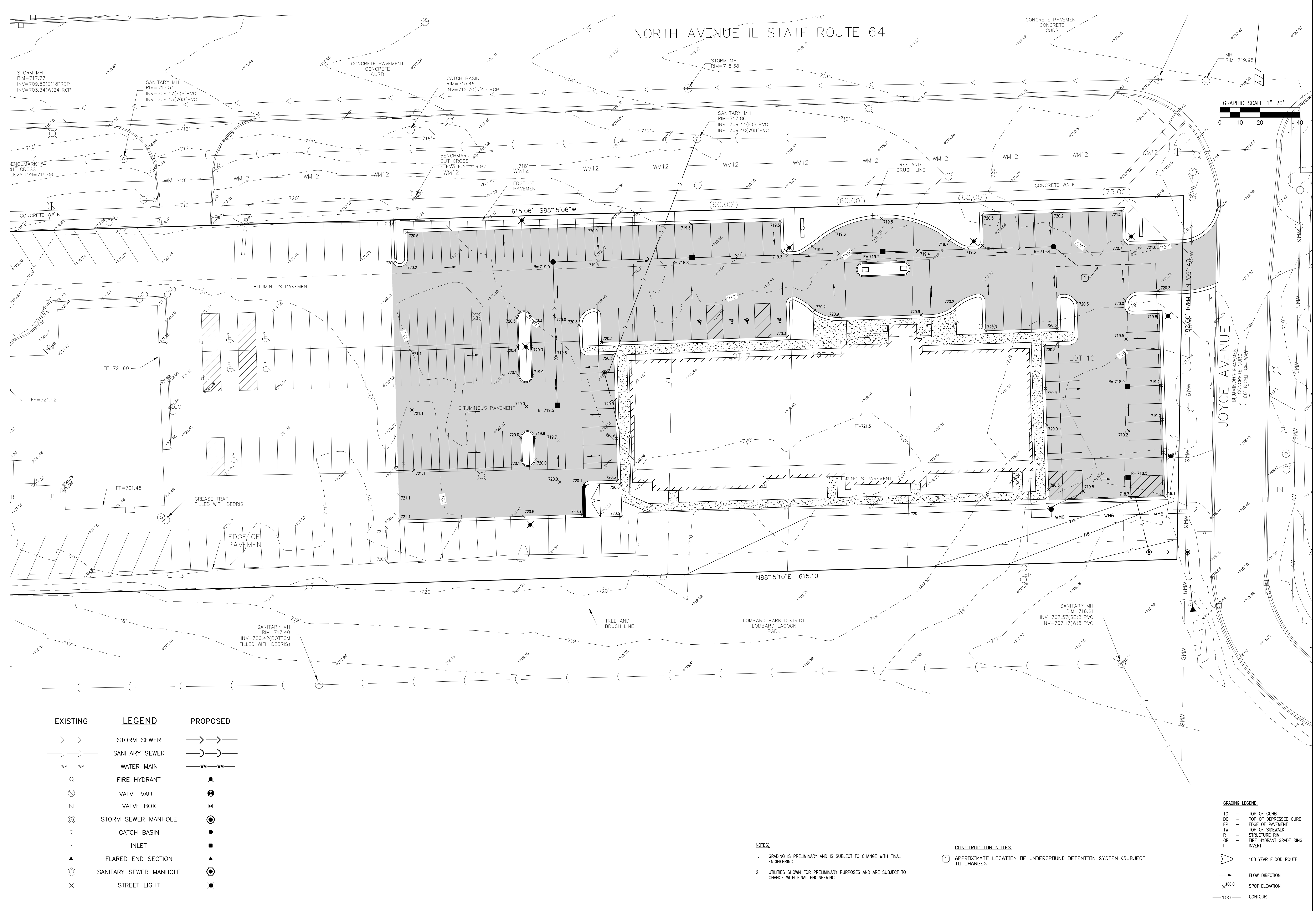
SITE DATA TABLE

DEVELOPED AREA:	71,197 S.F.
IMPERVIOUS AREA:	59,526 S.F. (83.61%)
PERVIOUS AREA:	11,671 S.F. (16.39%)
STANDARD PARKING STALLS:	83
A.D.A. PARKING STALLS:	4
TOTAL PARKING STALLS:	87

PAVEMENT LEGEND:

- STANDARD BITUMINOUS PAVEMENT:
- PCC SIDEWALK:
- B6.12 CURB & GUTTER
- 6" BARRIER CURB

P:\Projects\GIN20572\Engineering\DWG\20572\_base.dwg  
PDate: 1/7/2020 11:52 AM Layout: PRELIMINARY GEOMETRIC PLAN



NORTH AVENUE IL STATE ROUTE 64



1-7-20 PER VILLAGE REVIEW  
 12-31-19 REVISED GEOMETRY  
 DATE REV REVISION

PRELIMINARY  
 GRADING/UTILITY PLAN  
 DRAWN BY: NW JOB#: 20572  
 CHECKED BY: IC DATE: 12/31/19

HOLIDAY INN EXPRESS  
 LOMBARD, ILLINOIS

**GEOTECH INC.**  
 CONSULTING ENGINEERS - LAND SURVEYORS  
 1207 CEDARWOOD DRIVE CREST HILL, ILLINOIS 60403 815/730-1010

20572  
 2

EXISTING	LEGEND	PROPOSED
	STORM SEWER	
	SANITARY SEWER	
	WATER MAIN	
	FIRE HYDRANT	
	VALVE VAULT	
	VALVE BOX	
	STORM SEWER MANHOLE	
	CATCH BASIN	
	INLET	
	FLARED END SECTION	
	SANITARY SEWER MANHOLE	
	STREET LIGHT	

- NOTES:
1. GRADING IS PRELIMINARY AND IS SUBJECT TO CHANGE WITH FINAL ENGINEERING.
  2. UTILITIES SHOWN FOR PRELIMINARY PURPOSES AND ARE SUBJECT TO CHANGE WITH FINAL ENGINEERING.

- CONSTRUCTION NOTES:
1. APPROXIMATE LOCATION OF UNDERGROUND DETENTION SYSTEM (SUBJECT TO CHANGE).

GRADING LEGEND:

	TOP OF CURB
	TOP OF DEPRESSED CURB
	EDGE OF PAVEMENT
	TOP OF SIDEWALK
	STRUCTURE RIM
	FIRE HYDRANT GRADE RING
	INVERT
	100 YEAR FLOOD ROUTE
	FLOW DIRECTION
	SPOT ELEVATION
	100' CONTOUR