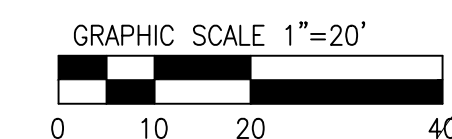
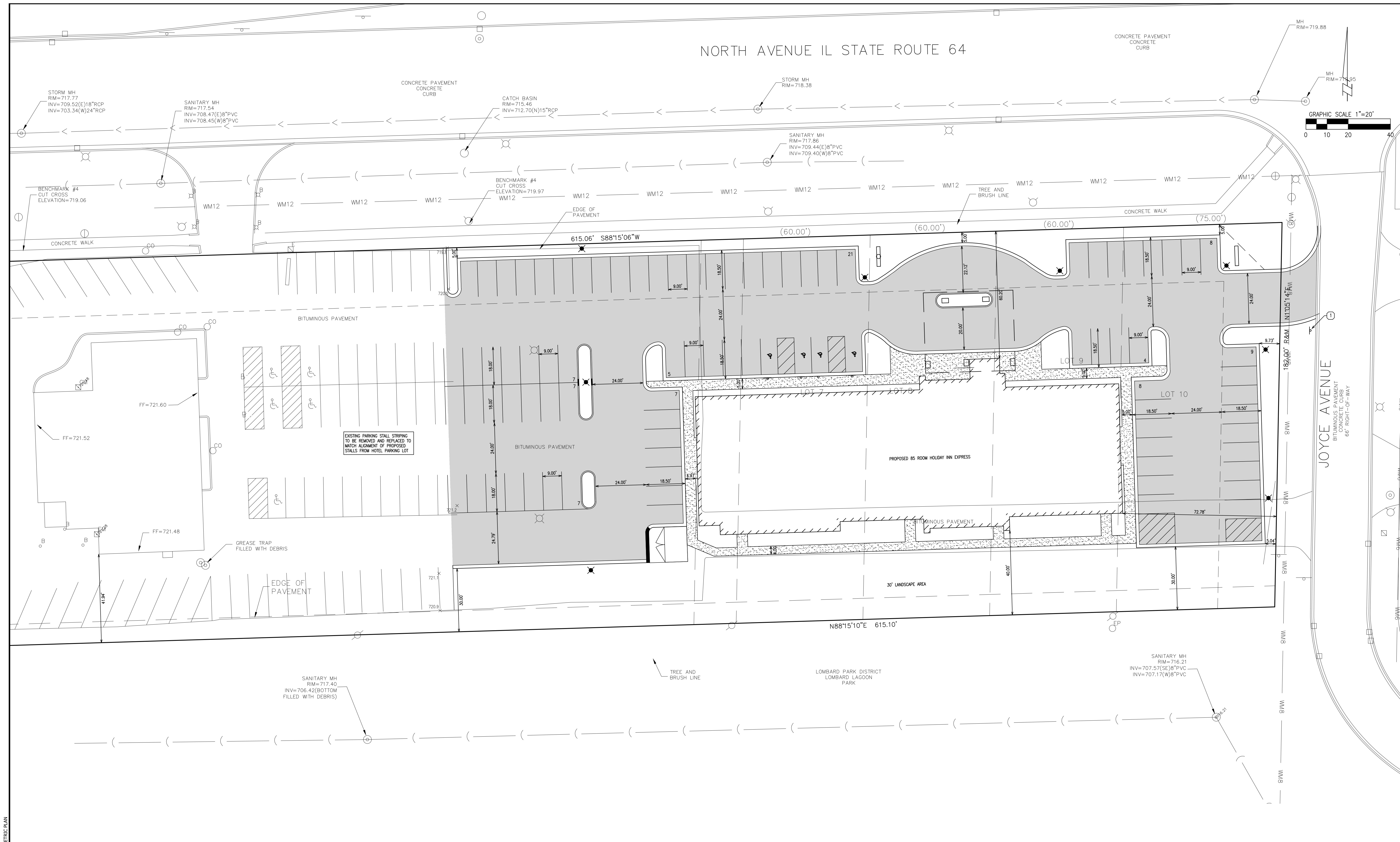


NORTH AVENUE IL STATE ROUTE 64



1-7-20 PER VILLAGE
 12-31-19 REVISED GEOMETRY
 2 DATE REV REVISION

PRELIMINARY GEOMETRIC
 PLAN
 DRAWN BY: NW
 CHECKED BY: IC

JOB: 20572
 DATE: 12/31/19

HOLIDAY INN EXPRESS
 LOMBARD, ILLINOIS

GEOTECH INC.
 CONSULTING ENGINEERS - LAND SURVEYORS
 1207 CEDARWOOD DRIVE CREST HILL, ILLINOIS 60403 815/730-1010

20572

EXISTING PARKING STALL STRIPING TO BE REMOVED AND REPLACED TO MATCH ALIGNMENT OF PROPOSED STALLS FROM HOTEL PARKING LOT

GREASE TRAP FILLED WITH DEBRIS

SANITARY MH RIM=717.40 INV=706.42(BOTTOM FILLED WITH DEBRIS)

CONSTRUCTION NOTES
 1 NO RIGHT TURN SIGN

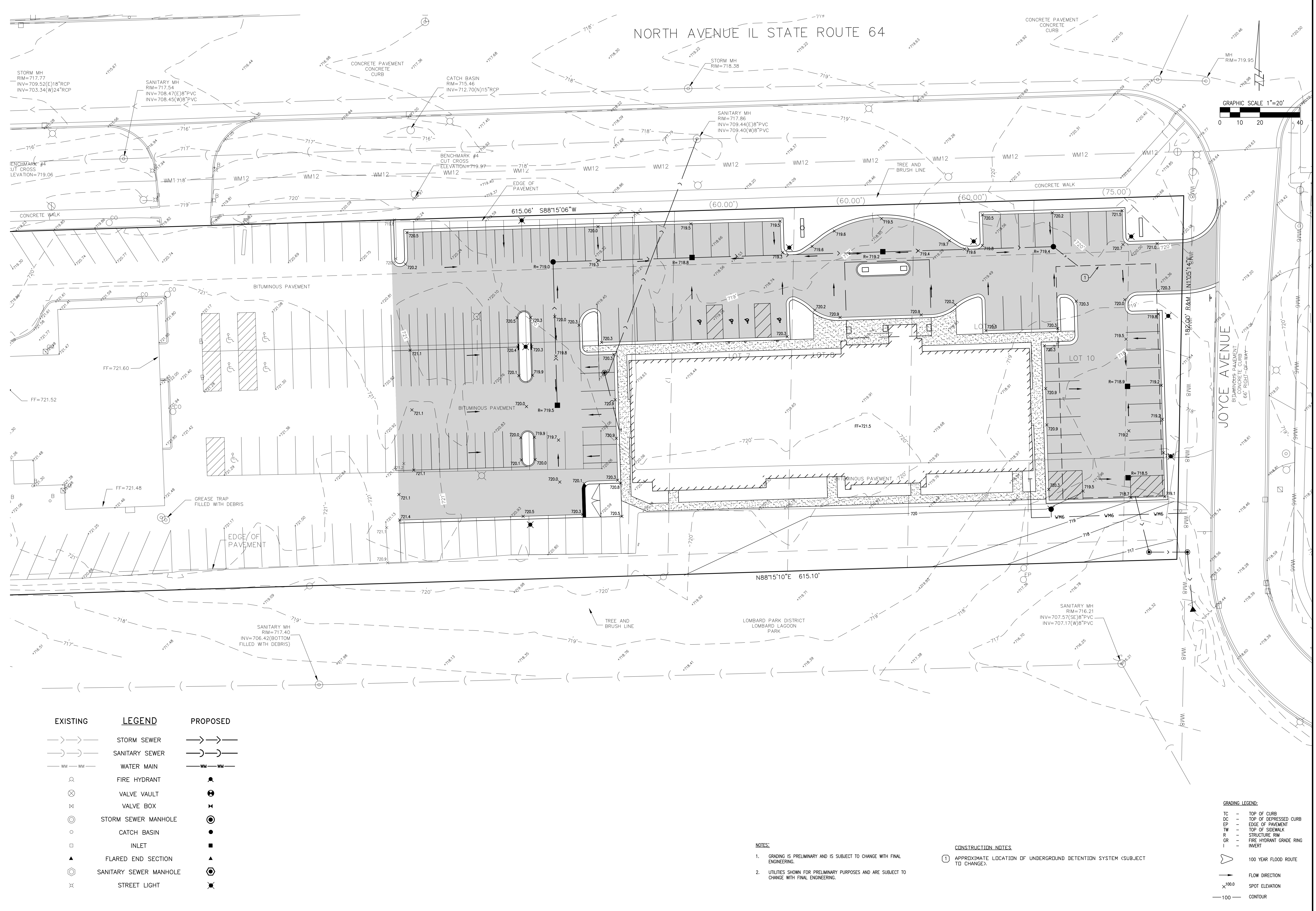
SITE DATA TABLE

DEVELOPED AREA:	71,197 S.F.
IMPERVIOUS AREA:	59,526 S.F. (83.61%)
PERVIOUS AREA:	11,671 S.F. (16.39%)
STANDARD PARKING STALLS:	83
A.D.A. PARKING STALLS:	4
TOTAL PARKING STALLS:	87

PAVEMENT LEGEND:

	STANDARD BITUMINOUS PAVEMENT:
	PCC SIDEWALK:
	B6.12 CURB & GUTTER
	6" BARRIER CURB

P:\Projects\GIN20572\Engineering\DWG\20572_base.dwg
 PLOTDATE: 1/7/2020 11:52 AM LAYOUT: PRELIMINARY GEOMETRIC PLAN



NORTH AVENUE IL STATE ROUTE 64



1-7-20 PER VILLAGE REVIEW
 12-31-19 REVISED GEOMETRY
 DATE REV REVISION

PRELIMINARY
 GRADING/UTILITY PLAN
 DRAWN BY: NW JOB#: 20572
 CHECKED BY: IC DATE: 12/31/19

HOLIDAY INN EXPRESS
 LOMBARD, ILLINOIS

GEOTECH INC.
 CONSULTING ENGINEERS - LAND SURVEYORS
 1207 CEDARWOOD DRIVE CREST HILL, ILLINOIS 60403 815/730-1010

20572
 2

EXISTING	LEGEND	PROPOSED
	STORM SEWER	
	SANITARY SEWER	
	WATER MAIN	
	FIRE HYDRANT	
	VALVE VAULT	
	VALVE BOX	
	STORM SEWER MANHOLE	
	CATCH BASIN	
	INLET	
	FLARED END SECTION	
	SANITARY SEWER MANHOLE	
	STREET LIGHT	

GRADING LEGEND:

	TOP OF CURB
	TOP OF DEPRESSED CURB
	EDGE OF PAVEMENT
	TOP OF SIDEWALK
	STRUCTURE RIM
	FIRE HYDRANT GRADE RING
	INVERT
	100 YEAR FLOOD ROUTE
	FLOW DIRECTION
	SPOT ELEVATION
	100' CONTOUR

- NOTES:
1. GRADING IS PRELIMINARY AND IS SUBJECT TO CHANGE WITH FINAL ENGINEERING.
 2. UTILITIES SHOWN FOR PRELIMINARY PURPOSES AND ARE SUBJECT TO CHANGE WITH FINAL ENGINEERING.

- CONSTRUCTION NOTES:
1. APPROXIMATE LOCATION OF UNDERGROUND DETENTION SYSTEM (SUBJECT TO CHANGE).